



For 35 years, WISH Drop-In Centre Society has been a safe women's-only space for street-based sex workers and an essential point of contact for frontline services.



OUR MISSION

To improve the health, safety, and well-being of women who are involved in Vancouver's street-based sex trade.

OUR VISION

The vision of WISH is that every woman should have access to opportunities to make free, healthy and positive choices.



9000 meals served per month



800 women seen by the MAP Van per month



512 referrals made per month



30 OD's attended per month



20 clinic visits per month



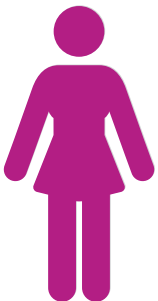
73 staff



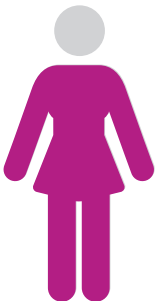
110 active volunteers

1200 street-based sex workers throughout Vancouver

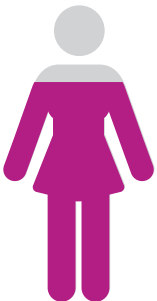
WISH serves **700-800** annually



100% are low income



90% are living with mental health issues and/or addictions



80% are homeless



60% are First Nations



45% are seniors



25% are LGBTQ



20% are Trans/Two Spirit



10% do not speak English



10% live with disabilities

EVERY PARTICIPANT



ENCOUNTERS: discrimination, stigma, violence, & social exclusion.



FACES HIGH BARRIER: housing, rehab facilities, & employment opportunities.



IS AFFECTED BY: opioid crisis, anti-sex work laws, mental health issues & poverty.

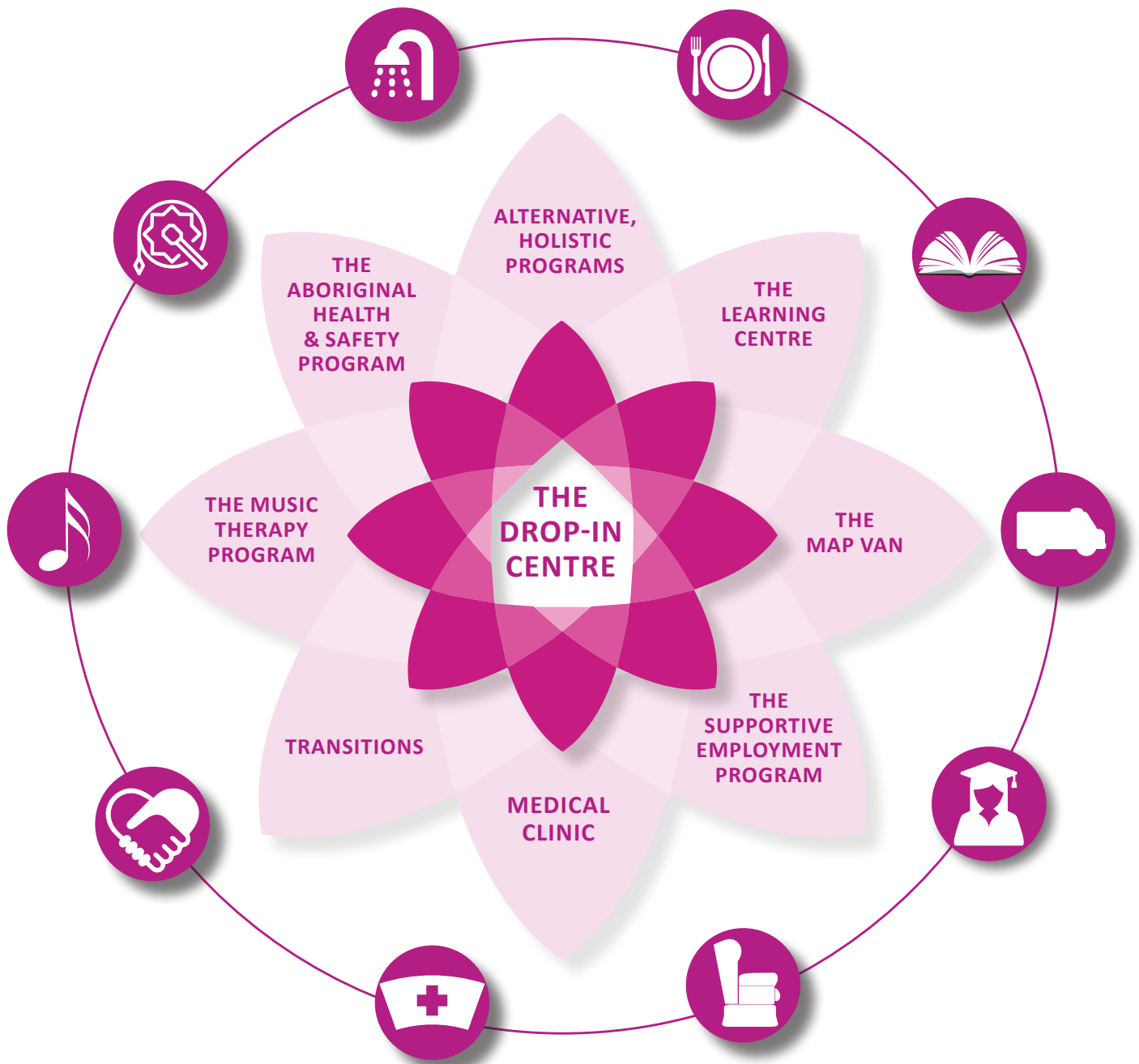


IS 7X MORE LIKELY: to die a violent death

OUR IMPACT

With **ACCEPTANCE, CARING, DIGNITY & RESPECT** we support women in making **free, safe and positive choices** in an inclusive, non-judgmental environment.

AWARD-WINNING PROGRAMMING



AWARDS

2017

- BC Centre for Disease Control & Provincial Harm Reduction Program Award for contributing to the Reversal of 10,000 Overdoses
- Great-West Life, London Life and Canada Life Literacy Innovation Award

2011

- Charity Intelligence Top Pick

2008

- Above & Beyond Award

2012

- Solicitor General Award for Crime Prevention & Community Safety
- Charity Intelligence Top Pick

2005

- AccolAIDS Award

YOUR ROLE

When you **invest in WISH**, you are investing in real, **positive change** in the lives of women, who sit at an **intersection of oppressions**. We cannot improve their lives without you.



YOUR IMPACT AT WISH

OUTREACH

\$1,000 = 30 women supported

LITERACY

\$1,500 = one month of literacy opportunities

MUSIC THERAPY

\$2,000 = 10 music therapy sessions

EMPLOYMENT

\$3,000 = 3 women into mainstream employment

CULTURAL CARE

\$4,000 = 1 year of elder facilitators

STAFFING

\$5,000 = 35 hours of frontline staffing



CONTACT

604-669-9474

| info@wishdropincentre.org

| wish-vancouver.net